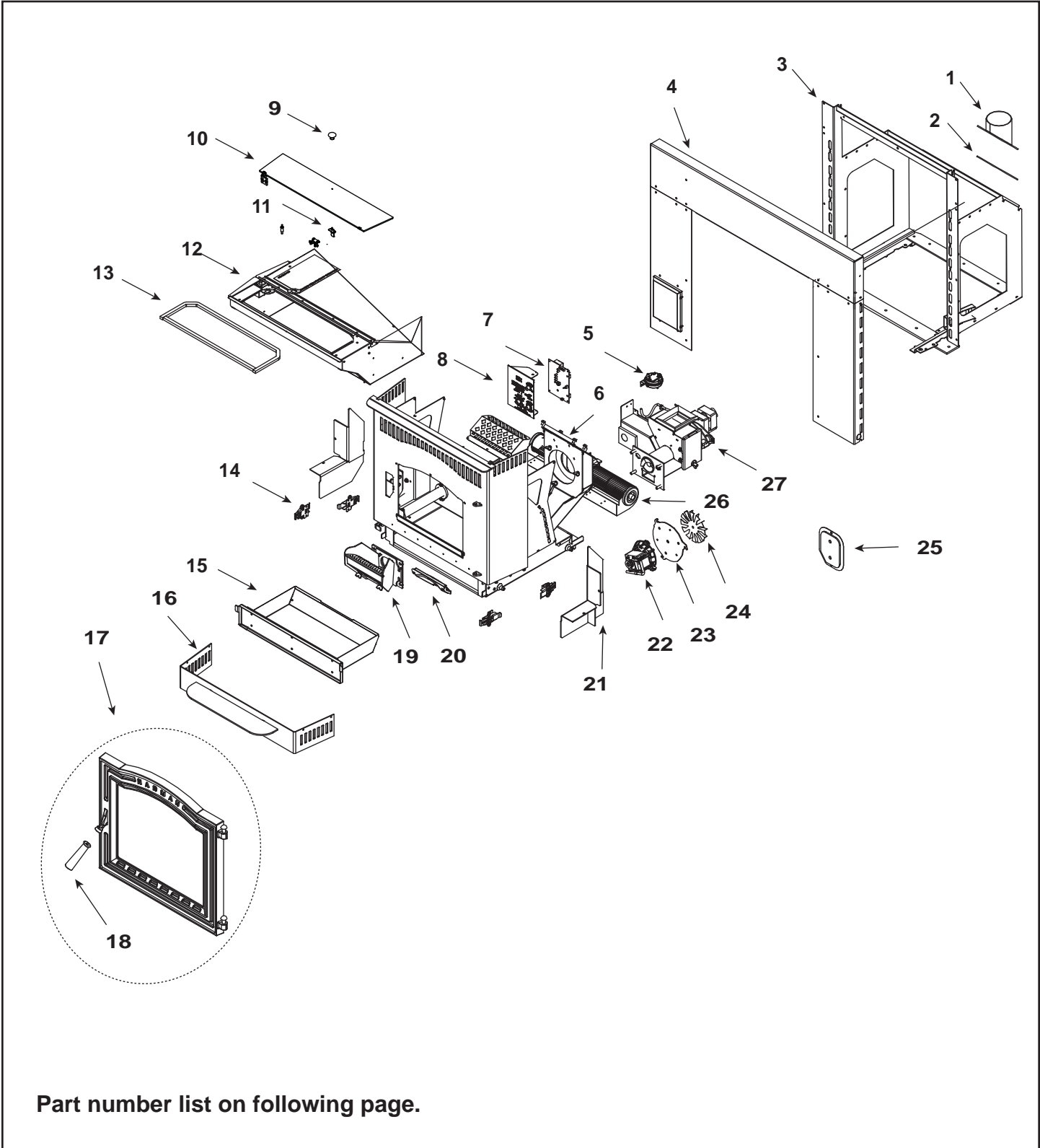


(23.5 in) 1-70-774235-1 (Black), (19.5 in) 1-70-774195-1 (Black),

Ending Manufacturing Date: June 2011
 (23.5 in) 1-70-774235-2 (Charcoal), 1-70-774235-3 (Goldenfire)
 (19.5 in) 1-70-774195-2 (Charcoal), 1-70-774195-3 (Goldenfire)



Part number list on following page.

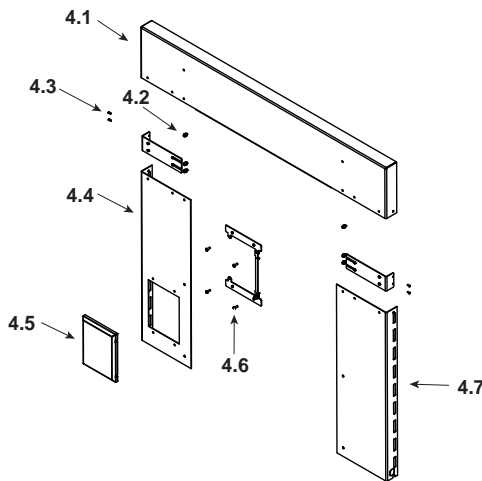
IMPORTANT: THIS IS DATED INFORMATION. When requesting service or replacement parts for your appliance please provide model number and serial number. All parts listed in this manual may be ordered from an authorized dealer.



Stocked
at Depot

| ITEM | Description | COMMENTS | PART NUMBER | |
|------|-------------------------------|-----------|--------------|---|
| 1 | Pipe Stub/4 in Flex w/gasket | | 1-00-674040 | |
| 2 | Gasket Set, Burnpot/Pipe Stub | Set of 5 | 1-00-07384 | Y |
| 3 | Mounting Frame Assembly | | 1-10-774235A | |
| | Srew-HCS5/16-18 X 1-1/4 | Pkg of 50 | 3-30-1129-50 | Y |

#4 Surround Assembly



| | | | | |
|-----|---|---------------------|-----------------|---|
| 4 | Wing Assembly | Over-size-Black | 1-00-774250-1 | |
| | | No longer available | 1-00-774250-2 | |
| | | No longer available | 1-00-774250-3 | |
| | | Custom | 1-00-774221-SPL | |
| 4.1 | Surround Top | Standard | 1-10-774222 | |
| | | Over-size | 1-10-774250 | |
| 4.2 | Machine Screw Nut10-32 | Pkg of 100 | 3-30-8003-100 | Y |
| 4.3 | Pop Rivet 1/8 X 1/8 Black | Pkg of 50 | 3-30-9004-50 | |
| 4.4 | Surround Left | Standard | 1-10-774220 | |
| | | Over-size | 1-10-774248 | |
| 4.5 | Control Door w/Hinge | | 1-00-774310 | |
| 4.6 | Screw, PHM 8 X 1/2 Black | Pkg of 100 | 3-30-5000-100 | Y |
| 4.7 | Surround Right | Standard | 1-10-774221 | |
| | | Over-size | 1-10-774249 | |
| 5 | Differential Switch | | 3-20-6866 | Y |
| 6 | Docking Gasket | | 3-44-06108 | Y |
| 7 | 4 Output Circuit Board w/Knobs & Shafts | | 1-00-05886 | Y |
| 8 | Circuit Board Plate | | 1-10-774114A | Y |
| 9 | Black Knob | | 3-43-02000-1 | |
| 10 | Top Assembly | Pre 008651553 | 1-10-774223A | Y |
| | | Post 008651553 | 1-10-774325A | Y |

Additional service parts on following page.

IMPORTANT: THIS IS DATED INFORMATION. When requesting service or replacement parts for your appliance please provide model number and serial number. All parts listed in this manual may be ordered from an authorized dealer.

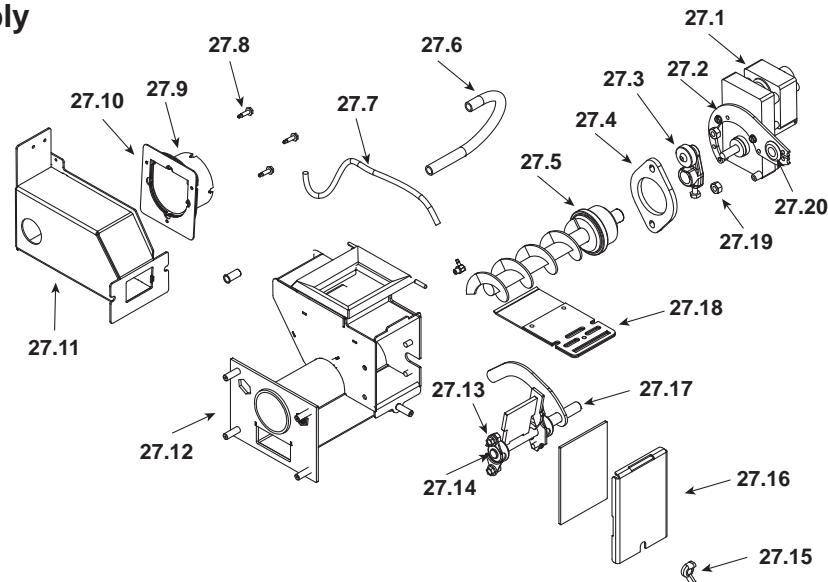


**Stocked
at Depot**

| ITEM | Description | COMMENTS | PART NUMBER | |
|------|--|----------------|--------------------|---|
| 11 | Hopper Latch | 2 Sets | 1-00-0669697 | Y |
| 12 | 23.5 in Hopper | Pre 008651553 | 1-10-774050A | Y |
| | | Post 008651553 | 1-10-774150A | Y |
| | 19.5 lin Hopper | Pre 008651553 | 1-10-774028A | Y |
| | | Post 008651553 | 1-10-774128A | Y |
| | Switch, Hopper Lid,48 in | | 3-20-232108 | Y |
| 13 | 3/8X1/2 Silicone PSA-20FT For hopper top | | 1-00-375501 | Y |
| 14 | Spring Latch | Qty 4 req | 3-31-00927 | Y |
| 15 | Ash Pan W/Gasket | | 1-10-774207 | Y |
| | Ash Pan Gasket | | 3-44-774211 | Y |
| 16 | Ash Pan Cover Assembly | | 1-10-774205A | |
| 17 | Load Door | Painted Only | 4-00-06800P | |
| | Door glass | | 3-40-00774 | Y |
| | 1/4 Rd Black PSA For glass | 15 Ft Length | 1-00-2312 | Y |
| | Glass Clips & Hdwr | | 1-00-249140 | Y |
| | Latch Kit | | 1-00-73553 | Y |
| | Cast Front Door Latch | | 3-00-249119 | Y |
| | 3/8 4 Strand White-30 Ft | 30 Ft Length | 1-00-00888 | Y |
| 18 | Wood Handle w/Bolt | | 1-00-00247 | Y |
| 19 | Burnpot w/Cleanout | | 1-10-774286 | Y |
| 20 | Flame Guide | | 3-00-03000 | Y |
| 21 | Cleanout Cover Set | Left & Right | 1-00-774213 | |
| 22 | Combustion Blower | | 3-21-08639 | Y |
| 23 | Combustion Blower Mount | | 1-10-677006 | |
| 24 | 4-3/4 Single Paddle Blade | | 3-21-00661 | Y |
| 25 | Combustion Cleanout | | 1-10-774167A | Y |
| 26 | Distribution Blower | | 3-21-29045 | Y |
| 27 | UL Feeder Assembly | | See following page | |
| | 14 Ft Power cord | | 3-20-674200 | Y |
| | 306W/120V Igniter 15 Fin | | 3-20-677200 | Y |
| | Diagnostic Display Module | | 3-20-05401 | Y |
| | Draft Meter Assembly | | 1-00-00637 | Y |
| | ESP-RED/RED | | 3-20-00844 | Y |
| | Pipe Insulation | | 3-44-774282 | Y |
| | Roller Hardware | 4 Sets | 1-00-05232 | Y |
| | Room Sensor | | 3-20-00906 | Y |
| | Touch up Paint, Black | 12 oz Can | 3-42-1990 | |
| | Wiring Harness | | 3-20-08727 | Y |

Additional service parts on following page.

#27 Feeder Assembly



IMPORTANT: THIS IS DATED INFORMATION. When requesting service or replacement parts for your appliance please provide model number and serial number. All parts listed in this manual may be ordered from an authorized dealer.



**Stocked
at Depot**

| ITEM | Description | COMMENTS | PART NUMBER | |
|-------|-------------------------------------|-------------|----------------|---|
| 27 | UL Feeder Assembly | | 1-10-774000A | Y |
| 27.1 | Pellet Feeder CW Motor-4 RPM | | 3-20-60906 | Y |
| 27.2 | Feeder Motor Bracket w/ Grommet | | 1-00-247406 | Y |
| 27.3 | Bearing 3/8 ID X 1-1/8 OD | | 3-31-3014 | Y |
| | Cast Cam Block | | 3-00-677154 | Y |
| 27.4 | Pellet Feeder Bearing RETNR w/Bolts | | 1-00-04035 | Y |
| 27.5 | Pellet Feeder Auger | | 3-50-00565 | Y |
| 27.6 | Feeder Air Crossover Kit | | 1-00-67900 | Y |
| | 9MM X 13MM Tubing Kit | 5 Ft Length | 1-00-511427 | Y |
| 27.7 | 1/8 Silicone Tubing | 5 Ft Length | 1-00-5113574 | Y |
| 27.8 | Screws-HWH TEKS 10 X 3/4 | Pkg of 100 | 3-30-5004-100 | Y |
| 27.9 | Pellet Air Intake w/Gasket | | 1-10-06810A | |
| 27.10 | Gasket, Feeder Air Intake | Pkg of 6 | 3-44-72224-6 | Y |
| 27.11 | Snout Weldment w/Gasket | | 1-10-774143A | |
| 27.12 | Pellet Feeder Weldment | | 1-10-724132 | Y |
| 27.13 | Flange 1/4-20 X 3/8 | Pkg of 50 | 3-30-2000-50 | Y |
| 27.14 | Pillow Block-1/2 in | Pkg of 4 | 3-31-3614087-4 | Y |
| 27.15 | Wing Nut, 5/16-18 | Pkg of 25 | 3-30-8012-25 | Y |
| 27.16 | Short Feed CVR & Gasket | | 1-00-677122 | Y |
| 27.17 | Pusher Arm Assembly | | 1-10-774354W | Y |
| 27.18 | Slide Plate | | 1-10-677121A | Y |
| 27.19 | Nut, FHN 5/16-18 Z 5 | Pkg of 100 | 3-30-8005-100 | Y |
| 27.20 | Grommet-1/2 in ID-Thick | Pkg of 12 | 3-31-2761-12 | |
| | Gasket Hopper Throat | | 3-44-677185 | Y |